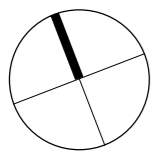


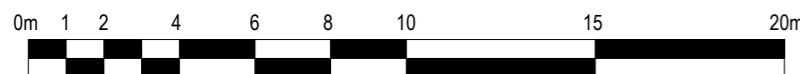
By Department Legend

- Basic teaching
- Halls and dining
- Learning resources
- Staff and admin
- Storage (teaching)
- Storage (non-teaching)
- Non-net



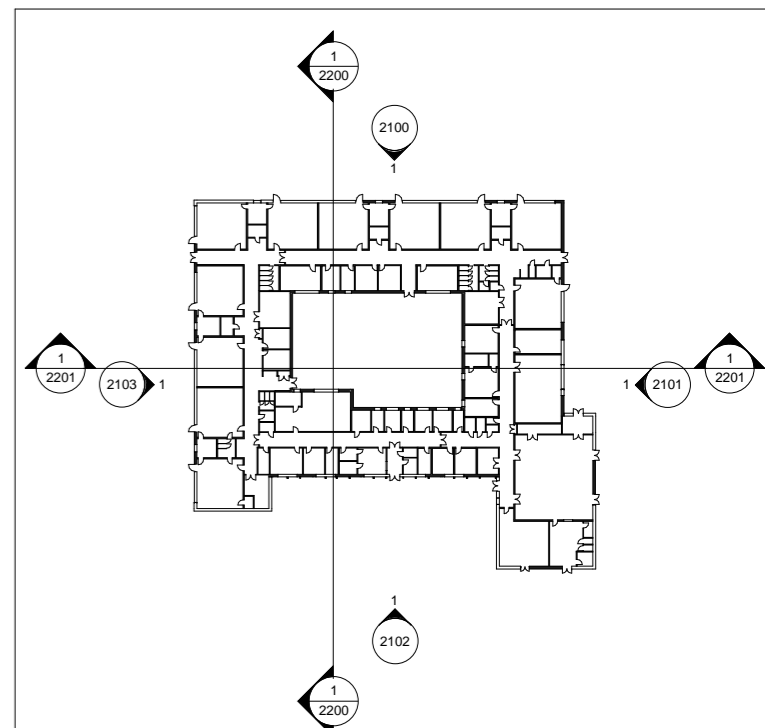
LEVEL 00 - PROPOSED PLAN

1 : 200



This drawing is copyright. It is sent to you in confidence and must not be reproduced or disclosed to third parties without our prior permission. Do not scale from this drawing. This drawing is to be read in conjunction with all relevant consultants, specialist manufacturers drawings and specifications. Any discrepancies in dimensions or details on or between these drawings should be drawn to our attention. All dimensions are in millimetres unless noted otherwise. Any surveyed information incorporated within this drawing cannot be guaranteed as accurate unless confirmed by fixed dimension.

REV:	DESCRIPTION:	BY:	CHK:	DATE:
P01	DRAWING CREATED BASED ON THE CONTROL OPTION.	AW	KH	2020/02/18.
P02	REORGANISATION OF CLASSROOMS, TOILETS, PLANT ROOM AND KITCHEN SUITE.	AW	KH	2020/03/04.
P03	MINOR CHANGES TO THE LAYOUT. OPENINGS ADDED. CANOPY AT THE ENTRANCE ADDED. GIFA DIAGRAM INCLUDED.	AW	KH	2020/03/10.
P04	MINOR CHANGES TO THE LAYOUT (POSITION OF THE STORES NEXT TO PRIMARY CLASSROOM KS1 3, ACCESS TO STAFF AND ACCESSIBLE WCS)	AW	KH	2020/03/12.
P05	GIFA DIAGRAM REMOVED.	AW	KH	2020/03/19.
P06	ACCESS TO THE COURTYARD FROM THERAPY SUITE REMOVED. MINOR REORGANISATION OF THE LAYOUT FOLLOWING PROJECT LAUNCH.	AW	KH	2020/04/18.
P07	CEILING HOIST SYSTEMS INDICATED. DB STORES ADDED.	AW	KH	2020/04/20.
P08	THERAPY ROOM AND STORE MERGED.	AW	KH	2020/04/29.
P09	ACCESS TO THE NORTH-WESTERN EXTERNAL PLAY AREAS MOVED.	AW	KH	2020/05/05.
P10	MINOR REORGANISATION OF THE LAYOUT TO BETTER ACCOMMODATE TOILET SUITES AND STORAGE ROOMS. MINOR CHANGES TO THE LAYOUT OF THE ADMINISTRATION SUITE. SUITABILITY CHANGED FROM S2 TO S3.	AW	KH	2020/05/22.
P11	PLAN DEVELOPMENT FOLLOWING CEM5.	AW	KH	2020/06/08.
P12	PLAN DEVELOPMENT FOLLOWING CEM6.	AW	KH	2020/06/19.
P13	EYFS WC/SMALL GROUP ROOM 1 LOCATION CHANGE.	AW	KH	2020/06/22.
P14	GENERAL MAINTENANCE STORE/STORE 4 AND EYFS WC/SMALL GROUP ROOM 1 LOCATION CHANGE.	AW	KH	2020/06/24.



PURPOSE: **FOR REVIEW AND COMMENT**
 PROJECT: **DISCOVERY SPECIAL ACADEMY**

DESCRIPTION: **LEVEL 00 - PROPOSED PLAN**

DRAWN BY: **AW** SCALE: **As indicated** SHEET SIZE: **A2** DATE: **18/02/2020**

PRO. NO.	ORIG.	VOLUME.	LEVEL.	TYPE.	ROLE.	NUMBER.	SUITABILITY.	REV.
19213	HL	01	00	DR	A	2000	S3	P14



Liddon House, Belmont Business Park, Durham, DH1 1TW. T: Durham (0191) 3849470 E: hlp@hlpuk.com
 16-25 Bastwick Street, London, EC1V 3PS T:(0207) 2518905 E: hlp@hlpuk.com
 www.howarthlitchfield.com

© Copyright and all intellectual property rights remain vested in Howarth Litchfield Partnership Limited