



Discovery Special Academy Newsletter Autumn 2A 2022

Discovery Community Grows

Wow!! We have had a great Autumn term in our new building and with our very first group of year 7 students who have been incredible role models for our younger pupils.



Our new minibus has arrived—well, we have a temporary bus to keep us going until the brand-new bus complete with the new logo arrives in the spring. This means that we will be able to bring our community together a lot more over the next two terms. Watch this space for some joint events and opportunities for families to come in and join us again.



Enterprise Success

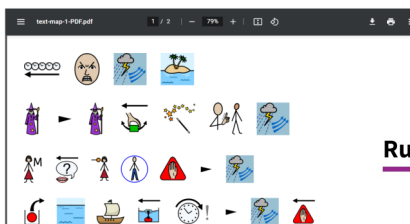
Thank you so much for your support with our Christmas singing and enterprise event. We are very pleased to say that all of our classes have made enough money to buy a new resource for their classroom.



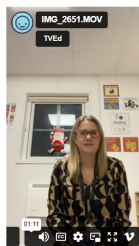
Curriculum Pages

Our curriculum class pages have lots of videos and information about what the students across Discovery are learning each term. Please take time to have a look and explore what is there. A new newsletter will appear for each class early spring.

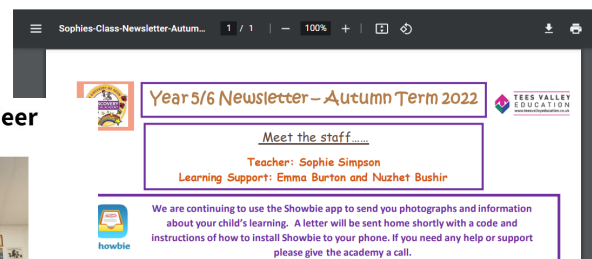
The Tempest



Rudolph the Red Nose Reindeer



Sophie's Class Autumn Newsletter



<https://www.discoveryspecialacademy.org.uk/curriculum/discovery-curriculum/>

Christmas at Discovery



Find lots more amazing pictures at.....

<https://www.discoveryspecialacademy.org.uk/celebrating-discovery/academy-gallery-2022-23/>

New Parking Plans at Sandy Flatts Lane

Now we have lived in the new building for a term, we have reviewed the parental drop off at Sandy Flatts. In the spring term, we are going to ask parents dropping off at Sandy Flatts to come into the car park and use the disabled access spaces and the spaces opposite. Keith will be on the gate to direct you in and we will make sure there are a few spaces clear each morning and afternoon. We will review this at the end of spring 1 and ask you to let us know how you think this is working.

We would ask that you are mindful of minibuses coming in and out, as well as looking very carefully to ensure no children are getting out of nearby cars before parking or leaving the spaces.

Please also ensure you use the paths from the car park to the main entrance and don't cut across in front of the minibuses. We will be there to direct and support.



Spring Term Dates

A reminder that we return for the spring term on Tuesday 3rd January.

We also have a PD day at the end of the spring term on Friday 17th February. This means that the students last day before the half term break will be Thursday 16th February

<https://www.discoveryspecialacademy.org.uk/>